



WIZnet Virtual Serial Port for Serial-to-Ethernet enabled CPnnnnn Control Panels

TABLE OF CONTENTS

- Ethernet Interface enabled Control Panels.....3**
- Driver and Software Download.....3**
- Configuration of Virtual Serial Port.....3**
- Ordering Information.....7**
- Change History.....7**
- Notices.....8**
 - Copyright Notice.....8
 - Technical Notice.....8
 - Warranty Disclaimer.....8
- Ordering Information.....8**
- Change History.....9**

ETHERNET INTERFACE ENABLED CONTROL PANELS

The CPnnnn-SUE control panels from [E³] use the WIZNET WIZ550SR virtual serial port module for Ethernet interface to the CC0064 controller and CP panel.

This document provides a description for the download of the required drivers and software, registration of the MAC address, and installation and configuration of the Virtual Serial Port on a CP1201 panel.

Other CP panels use the same procedure.

For more detailed information, please visit the WIZNET website at www.wiznet.io and our website at www.e3-keys.com.

DRIVER AND SOFTWARE DOWNLOAD

Before you can use the Ethernet interface enabled CP panel you need to download and install the required drivers and software from WIZNET.

[WIZnet Configuration Tool](#) (JAR)

[WIZnet WIZ VSP Program](#) (ZIP)

CONFIGURATION OF VIRTUAL SERIAL PORT

1. To start using the Ethernet interface of the CP1201 control panel, connect the panel to your network via an RJ45 cable and connect the power supply to the CP1201.

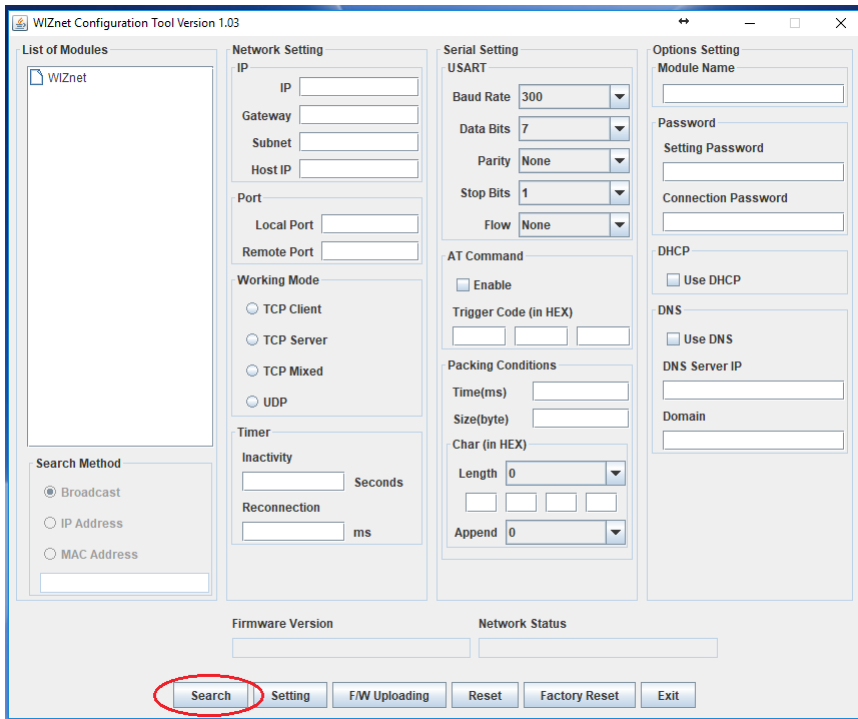


2. All LCD switches will turn to red background color and display the [E³] logo.

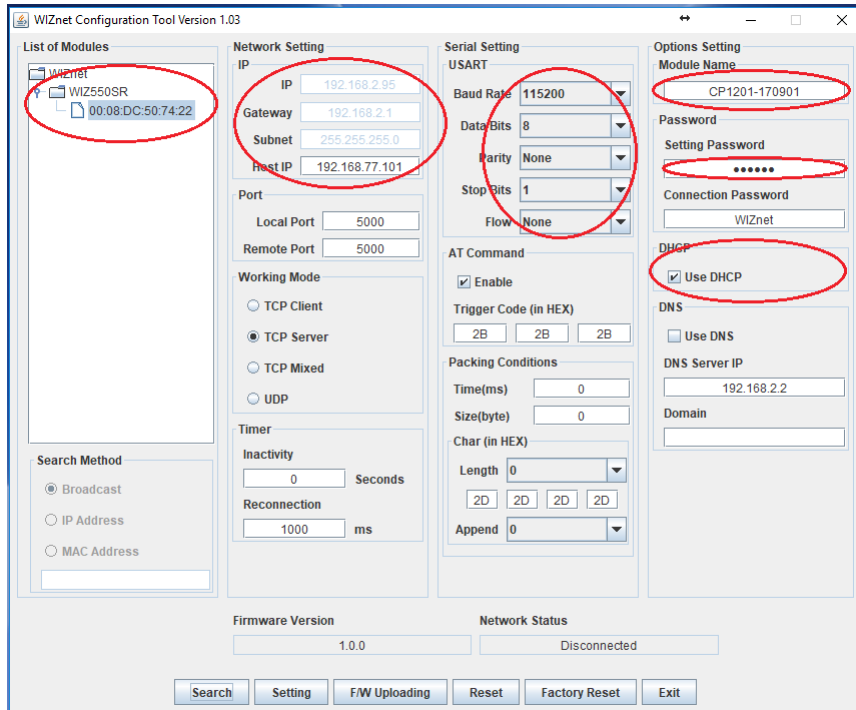


3. Run WIZnet_Configuration_Tool.jar

If necessary install the latest version of JAVA SE runtime environment [here](#).



4. Click Search



The WIZnet configuration tool will search your network for a WIZnet module with the registered MAC address.

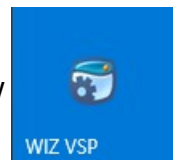
Configuration	Example	Your settings
MAC Address:	00:08:DC:50:74:22	_____
IP Settings:		
IP Address:	192.168.2.95	_____
Gateway:	192.168.2.1	_____
Subnet:	255.255.255.0	_____
Host IP:	192.1168.77.101	_____
Serial Settings:		
Baud Rate:	115200	115200
Data Bits:	8	8
Parity:	None	None
Stop Bits:	1	1
Flow:	None	None
Module Name:	CP1201-170901	_____
Password:		
Settings:	WIZnet	_____
Connection	WIZnet	_____

The default settings for a CP1201 panels are shown in the example above. Please write down the corresponding settings of your device for your records. If you wish to use a static IP addresses, DNS server, different passwords for settings and connections, please refer to the WiZ550SR Programmers Guide for more details.

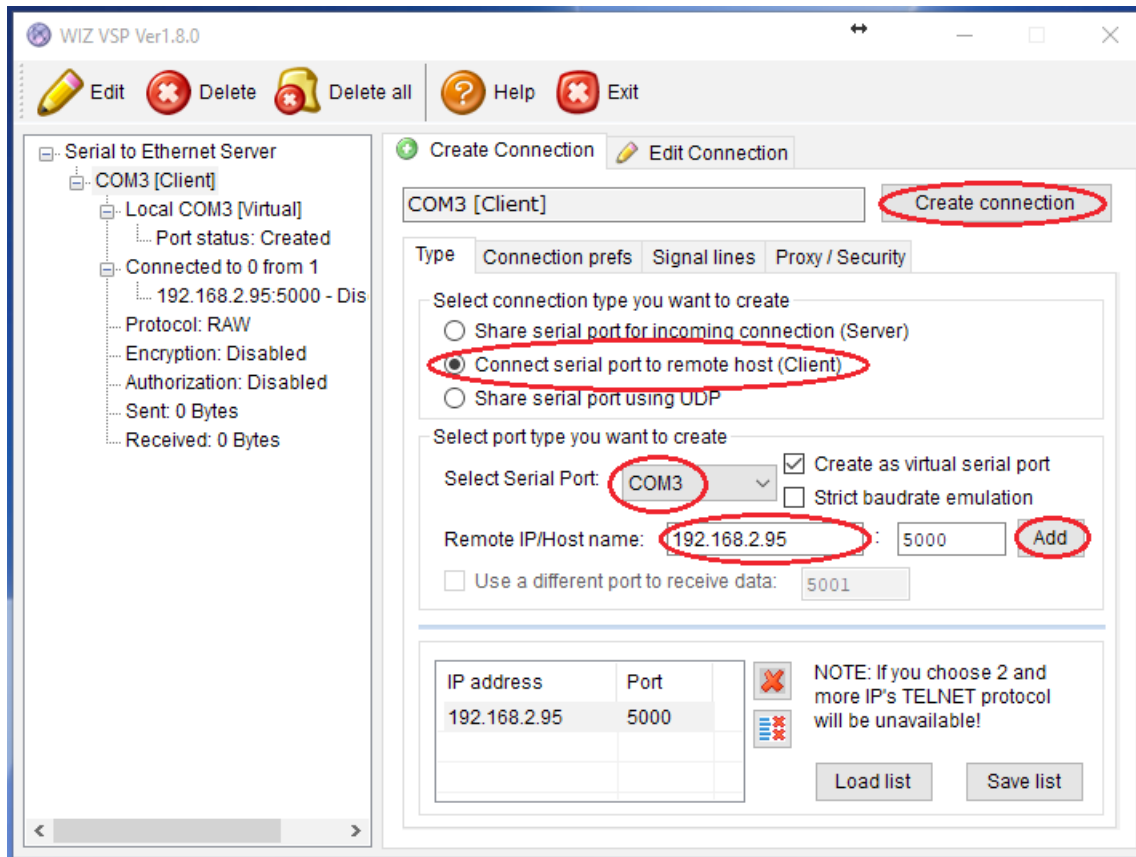
5. Download the WIZVSP program [here](#) after you provided the registration information and MAC address. You will be able to download the **WIZVSP_v180_R1.ZIP** file.

You will received an e-mail from the WIZNET Support Team with your serial key, which is required for the next step.

6. Run **Setup.exe** for the **WIZVSP_v180_R1** virtual seral port installation and follow the installation instructions.



7. Start the WIZ VSP program by double-clicking on the WIZ VSP icon.



8. Under the Create Connection tab, select **Connect serial port to remote host (Client)**, select a free **COM** port and enter the **IP address** assigned to your CP panel (see above)

Click **Add** and **Create connection**

NOTE: You must transmit the **Connection Password** within **5000 msec (see above; default WIZnet)** to establish the virtual serial port. Otherwise WIZ VSP will disconnect and try to restart the connection. This will be done automatically if you start the **CPControl** program within 5 seconds of creating the VSP connection (see CPControl manual).

The virtual COM port status is shown in the left pane.

The WIZ virtual serial port is ready to use.

NOTICES

Copyright Notice

© 2018-2022 Copyright [E³] Engstler Elektronik Entwicklung GmbH. All rights reserved.

[E³], *The Third Evolution*[™] and *Legacy Mode*[™] are trademarks of [E³]. *The Keys to Intelligence*[™] is a trademark of I/O Universal Technologies, Inc. used with permission. All other trademarks are property of their respective owners.

No part of this publication may be copied, photocopied, reproduced, translated or reduced to any electronic medium or machine-readable form without the expressed written consent of [E³] Engstler Elektronik Entwicklung GmbH.

Technical Notice

This datasheet is intended for technically qualified personnel trained in the field of electronics.

The knowledge of electronics and the technically correct implementation of the content of this datasheet are required for problem free installation, implementation and safe operation of the described product. Only qualified personnel have the required know-how to implement the specifications given in this data sheet.

For clarity, not all details regarding the product or its implementation, installation, operation, or maintenance have been included. Should you require additional information or further assistance, please contact your local [E³] distributor or [E³] Engstler Elektronik Entwicklung GmbH at techsupport@e3-keys.com. You may also visit our website at www.e3-keys.com.

Warranty Disclaimer

[E³] ENGSTLER ELEKTRONIK ENTWICKLUNG GMBH grants no warranty with respect to this data sheet, neither explicit nor implied, and it is not liable for direct or indirect damages. Some states do not grant the exclusion of incidental or consequential damages and, therefore, this statement may not be valid in such cases.

This data sheet has been produced with all due care. However, since errors cannot be excluded, [E³] Engstler Elektronik Entwicklung GmbH does not grant any warranty or accept any legal responsibility or liability in any form for erroneous statements herein.

ORDERING INFORMATION

Part Number	Description
CPnnnn-SUE	Control panels with RS232, USB and Ethernet interfaces
Sx6432-B	Sx6432 pushbutton keyswitch with 64x24 pixel display Black housing (RAL 9005)

CHANGE HISTORY

Version	Date	Comments
0.1	09/13/17	Initial draft document
0.2	11/28/17	Draft revisions
1.0	12/11/17	Release version
1.1	02/27/18	Layout correction
1.2	07/15/20	New Formatting
2.0	06/16/22	Updated release document

[E³] Engstler Elektronik Entwicklung GmbH
Industriering 7 • 63868 Grosswallstadt • Germany
WWW.E3-KEYS.COM